



11333 N. Cedarburg Rd 60W
Mequon, WI 53092-1930
Phone: 262-236-2913
Fax: 262-236-1580

www.ci.mequon.wi.us

Office of the Parks and Forestry Superintendent

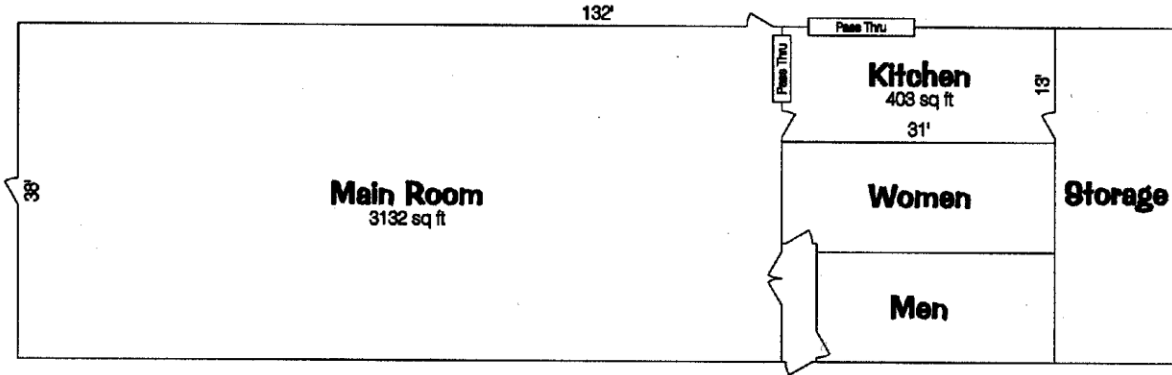
**INFORMATION FOR PAVILIONS
LOCATED IN
ROTARY PARK
4100 West Highland Road**

REUTER PAVILION

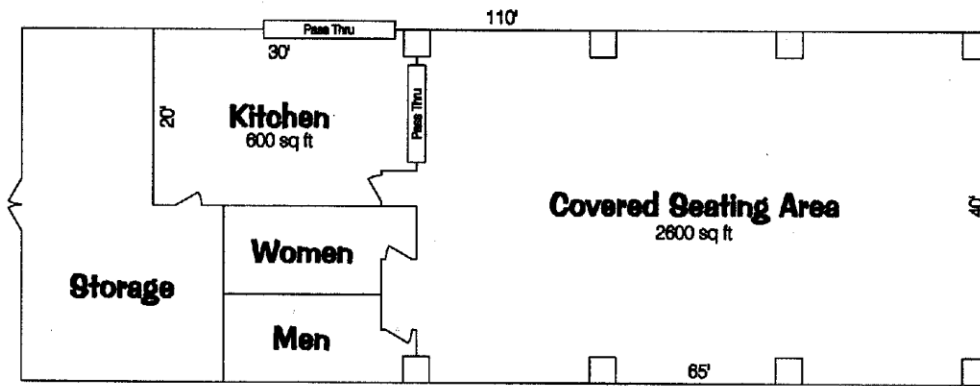
- ◆ Enter the Park using the east driveway and follow it all the way back to the pavilion.
- ◆ This is a heated three-season enclosed pavilion. There is no air conditioning, but there are a number of windows for ventilation in the warmer weather along with three ceiling fans.
- ◆ On the backside of this sheet is a diagram with the dimensions for this pavilion.
- ◆ The kitchen has a full sized refrigerator, range (stove and oven), microwave and sink.
- ◆ There is a charcoal grill outside the pavilion for your use.
- ◆ There is a large amount of counter space with a number of electrical outlets.
- ◆ The use of deep fryers inside the pavilion is prohibited.
- ◆ There are 20 *round* 6' tables that will seat 200 people. There are 240 chairs available. Four rectangular banquet tables for your use are also provided in the pavilion.
- ◆ Tables and chairs are for indoor use only.
- ◆ You can arrange the tables and chairs in any pattern to accommodate your needs, but we ask that you return them to their original position when your event is over.
- ◆ Washroom facilities are located in the pavilion, which are also available to other park users such as sport teams, hikers, etc. (Park users have a separate entrance to the washrooms)
- ◆ The Parks Department provides trash cans and liners for your convenience. Please seal all trash bags after your event and Parks Department crews will dispose of them for you.
- ◆ Parking spaces - 210

ROTARY PAVILION

- ◆ Enter the park using the west driveway, which takes you directly to the pavilion.
- ◆ This is a covered open-air pavilion. The kitchen is completely enclosed.
- ◆ On the backside of this sheet is a diagram with the dimensions for this pavilion.
- ◆ The kitchen has a full sized refrigerator, microwave and sink. There is no stove.
- ◆ There is a charcoal grill outside the pavilion for your use.
- ◆ There is a large amount of counter space with a number of electrical outlets.
- ◆ There are 20 picnic tables, which seat about 120 people. You can arrange the tables in any pattern to accommodate your needs, but we ask that you return them to their original position when your event is over.
- ◆ There are roller shades on three of the pavilion openings on the north side of the building for your use. Before leaving the park please roll the shades up and padlock them in place. If they were vandalized due to the fact that they were not returned to an upright position, your deposit would be withheld and used towards the repair cost.
- ◆ Washroom facilities are located in the pavilion, which are also available to other park users such as sport teams, hikers, etc.
- ◆ The Parks Department provides trash cans and liners for your convenience. Please seal all trash bags after your event and Parks Department crews will dispose of them for you.
- ◆ Parking spaces – 80



Reuter Pavilion Building
5016 sq ft



Rotary Pavilion Building
4400 sq ft